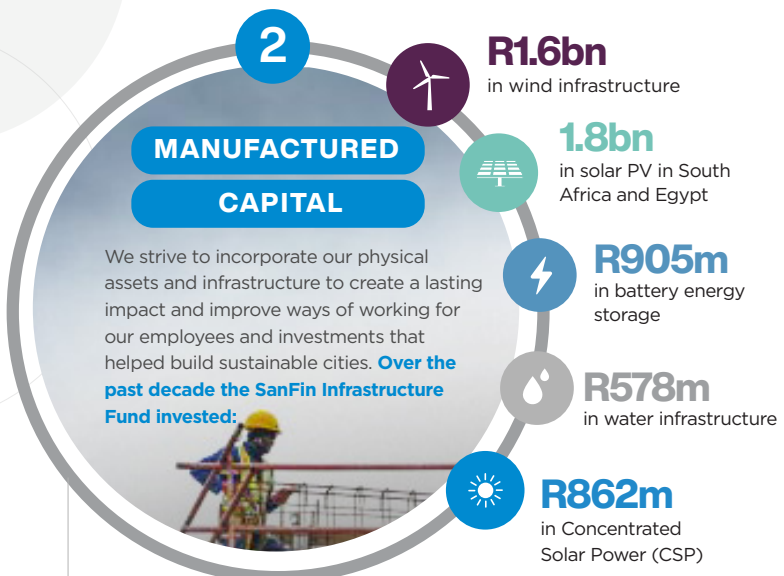


Sanlam's commitment to Socio-economic development & sustainability

As a leading financial services company, Sanlam is dedicated to driving socio-economic development and sustainability in all the communities in which we operate. We follow a comprehensive approach that aligns with the six capitals of integrated reporting which include: financial, manufactured, intellectual, social and relationship and natural capital. In 2023 we focused on making positive contributions to each of these areas, demonstrating our commitment to long-term success and sustainability.



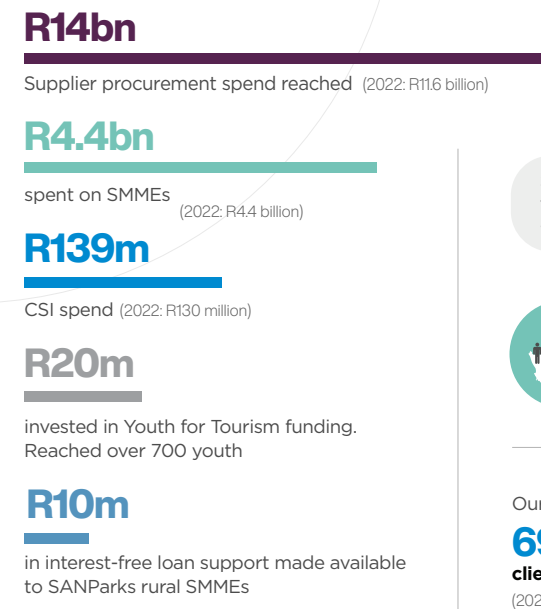
- Insurtech joint venture with MTN aYo**
over **4.5 million** lives touched across Africa, providing cost efficient products to the underserved
- Solar PV Project**
At the Sanlam Bellville Head Office to be launched in 2024 over **R100 million** invested

3 INTELLECTUAL CAPITAL

- Contributed to the **National Green Finance Taxonomy initiative** in South Africa
- Launched the **first Sanlam ESG Barometer** in South Africa
- (TCFD) **best practice case study 2023 yearbook** by the Financial Stability Board (FSB) in South Africa
- Launched the **third Sanlam Transformation Gauge**

- SANLAM CERTIFIED** as a **Top Employer for the ninth consecutive year** by the Top Employers Institute
- SANLAM INVESTMENTS AWARDED 2023 Sustainable Asset Manager Award** by 27four Investment Managers

5 SOCIAL AND RELATIONSHIP CAPITAL



Sanlam has achieved a **BBBEE level 1** for 6 years consecutively with a year-on-year increase in total points.

60k people reached across South Africa with disaster information, education and awareness in collaboration with strategic partners in the Partnership 4 Risk and Resilience (P4RR) programme

Our products touch the lives of **69m** clients in Africa and Asia (2022: 32 million)

Sanlam partnered with **95 municipalities under (P4RR)**. These interventions have an indirect influence on more than **13 million individuals**. As part of its adaption strategy, **Sanlam collaborated with Capricorn District Municipality to plant approximately 200 indigenous trees**. Over 30 000 people received targeted disaster risk education and awareness training, bringing the total to 66 338. Additionally, **252 persons were trained in firefighting safety, disaster management, and related courses, bringing the total to 712.**

SPECIAL PROJECTS

Kay Motsepe Schools Cup
awarded total prize money of **R11.75 million** to winning schools participating in the school competition for u19 boys, u14 girls and u14 boys

WoW Spelling Competition
with the University of Stellenbosch reached **231 700** beneficiaries through **149 Spelling Festivals** held nationally at primary and high schools



SMALL GRANTS FUND
Through its Small Grants Fund, the Sanlam Foundation **donated R1.9m to 19 NGOs** focusing on youth, people with disabilities, orphans, abused, neglected and vulnerable children, GBV and LGBTQIA+ causes

Support towards SDGs
Sanlam is intentional and prioritises SDGs that provide the biggest opportunity for shared value creation.

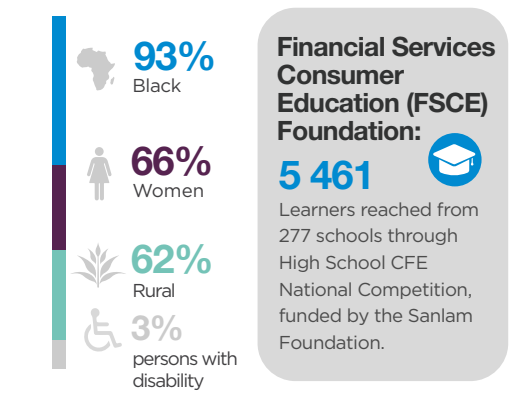


Reporting period as at 31 December 2023, unless otherwise stated.
Sanlam Limited is the Licensed Controlling Company of the Sanlam Limited Insurance Group, including Santam Limited.

CONSUMER FINANCIAL EDUCATION:

WageWise with ASISA Foundation
21 120 beneficiaries through **528 face-to-face workshops**

Money Fo 'Sho with Avocado Vision
14 370 Beneficiaries through **479 face-to-face workshops**



4 HUMAN CAPITAL

TRAINING AND DEVELOPMENT

- R258m** spent on black employees
- R15m** spent on unemployed black people
- R800k** spent on persons with disabilities

Culture score of **60**
(2022: 61, industry average of 50)

PEOPLE, DIVERSITY AND INCLUSION

- 113 748** people employed globally
- 21 125** South African employees
- 79%** Black employees
- 51%** Black female employees
- 62%** of women in our workforce

